

Magics

Professional software
for the RP&M industry

Materialise 

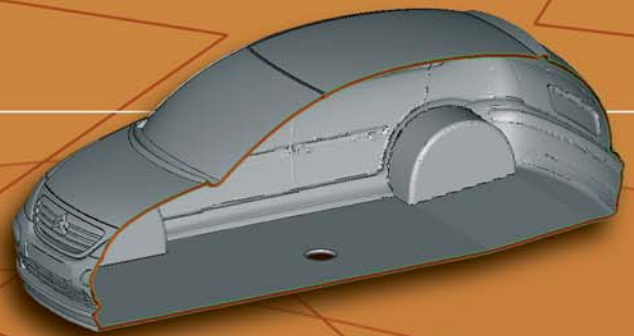
Magics - Professional

“

We use Magics for preparation for all of our files. This program is worth the investment many times over for anyone who does any in-house RP or even sends out information. It makes it very easy to put together builds, slice up parts, do offsets, create drainholes, etc. Our copy paid for itself many times in the first year because it allowed us to hollow parts accurately and quickly, saving material.

”

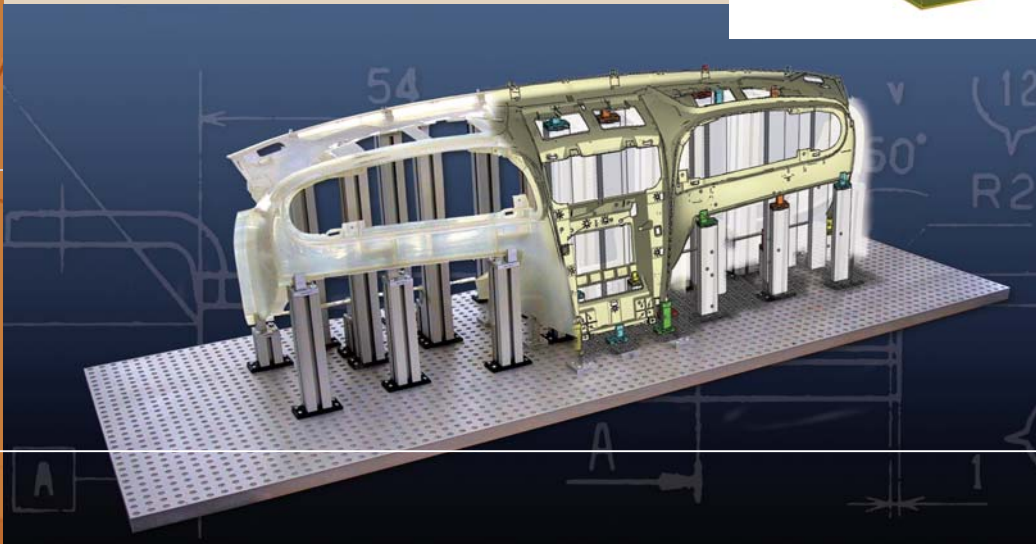
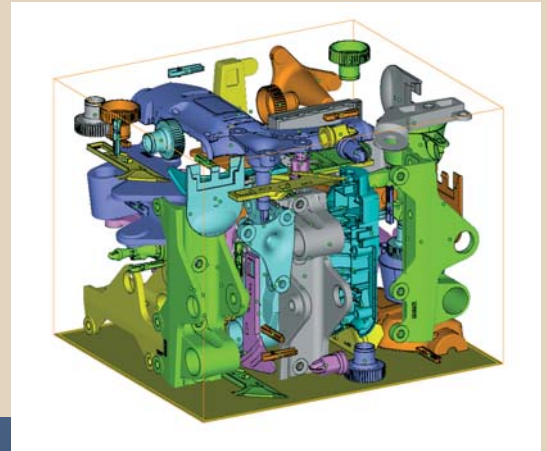
Charles Overy • Director of Engineering • laser graphic manufacturing • USA

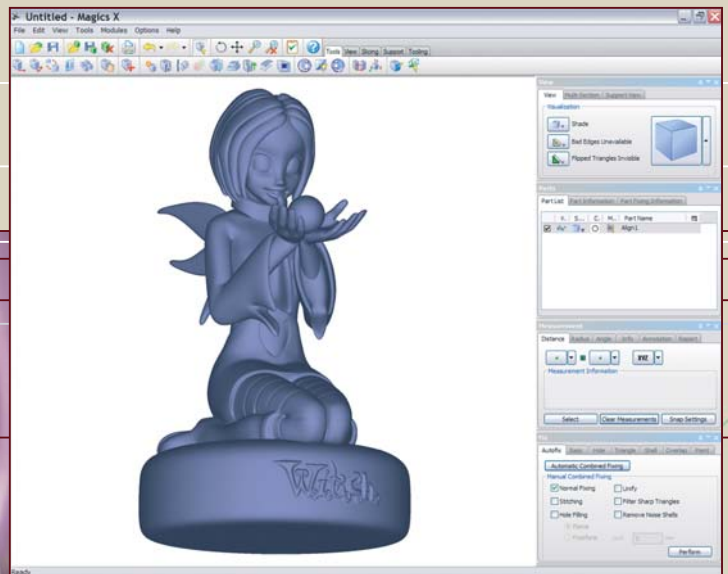


software for the RP&M industry

Rapid prototyping and rapid manufacturing (RP&M) isn't just about owning machines that can build parts quickly. It's also about streamlining a process that begins with quoting, data conversion and work preparation, and includes aspects of production planning and quality control, as well. All of these elements have to work in harmony to achieve a common goal: **speed without sacrificing quality.**

Users all over the world agree that Magics is indispensable software for achieving that goal.





“

The product's (Magics X) new user interface, faster rendering, more efficient handling of large files, and improved importing and exporting of files, make it worth serious consideration. Magics X is characteristic of the success that Materialise has enjoyed for so many years.

”

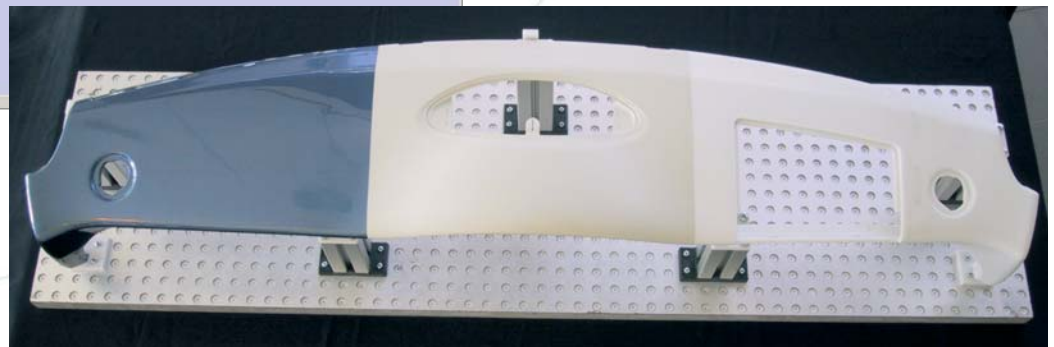
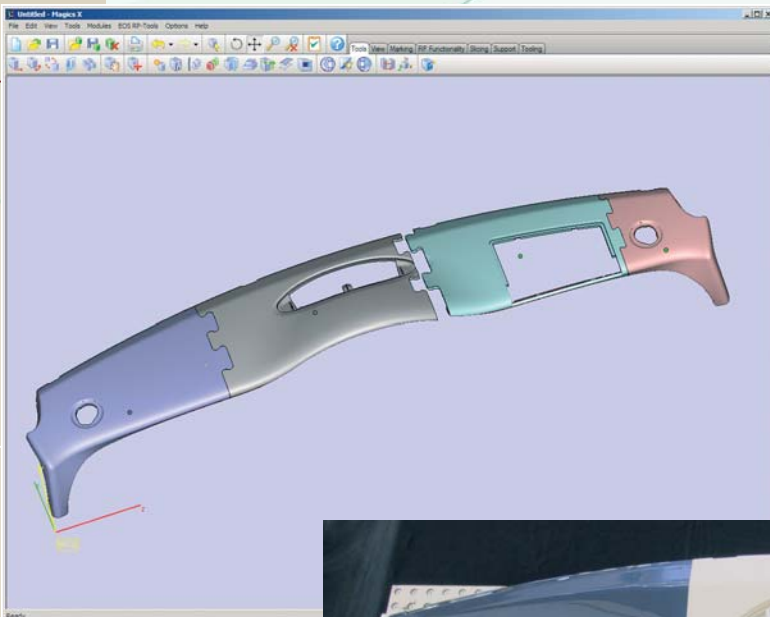
Terry Wohlers • industry consultant and president of Wohlers Associates • USA

Integrated Solutions for the RP&M Professional

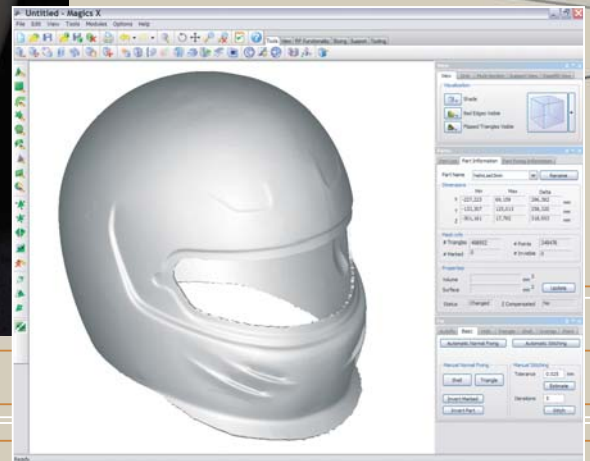
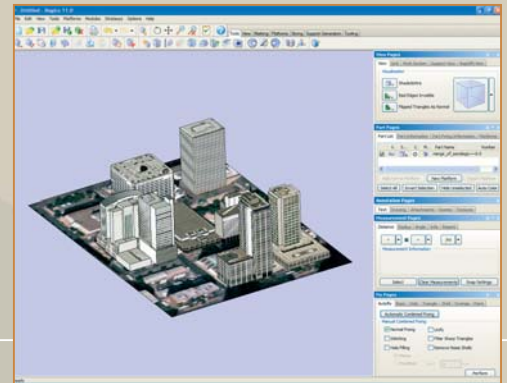
Thanks to Magics, now you can progress **from design to high quality prototype** and even to final product in the most efficient way possible. Magics is the key element of the Magics e-RP Suite, a full range of market-leading software products that will **streamline, automate and boost** almost every step in your RP&M process. The **Magics e-RP Suite** helps to control projects and production through the use of one clear overview. Magics software enables you to import a wide variety of CAD formats and to export files ready for rapid prototyping, tooling and manufacturing. Its applications include repairing and optimising 3D models; analysing parts; making process-related design changes on your STL files; designing fixtures; documenting your projects; production planning and much more.

Magics is backed by a comprehensive global **support** system, which ranges from excellent technical assistance through a dedicated User Community web site to personalised training programs.

Magics software provides a **fast, easy, and highly automated solution** to get the very best from your RP&M processes. We see the proof of its success in the **loyalty** demonstrated by both our Magics customers and RP machine manufacturers.



Integrated Solutions for the RP&M Professional



User-friendly, intuitive software environment

Magics is powerful, smart software that enhances its users' productivity, thanks to its **well-organised, customisable**, intuitive user interface. The software is easy to learn, so Magics users can begin to accomplish their most challenging tasks in no time at all!

Worldwide user base

The world's most advanced service bureaus, as well as RP departments in top automotive, consumer electronics and aerospace companies, depend on Magics to carve out a **clear competitive advantage** for them in today's tough business environment. We take great pride in seeing our customers excel.

Trusted partner of RP machine manufacturers

Most of the leading RP machine manufacturers and vendors package **special OEM versions of Magics** software in combination with their machines. Others have subcontracted portions of their software to Materialise.



© Jan Hoogsteyns

Continuous innovation & progress

The objective for each new Magics version is increased user-friendliness, a boost in efficiency, and greater potential to cut costs. In our ongoing effort to offer the best possible software available, a **dedicated team** focuses on improving Magics' functionality.

Magics users with a **maintenance contract** receive a new release, or an upgrade with innovative and updated features, on a regular basis.

Tailored to customer needs

Magics software is designed to act as a **modular system** that can be tailored to your individual needs.

In addition, Materialise offers a **floating license** system, enabling the user to start a Magics session on any computer in his local network. This is a very useful, economical solution in cases where several people are using Magics on a less frequent base.

Materialise has a dedicated department that specialises in **customising** Magics, as well as creating new applications based on Materialise technologies to the specific needs of the end-users.

Magics releases

Q1					5	6.2/6.3	7.1					X-SP2
Q2	1		4.1	4.3		5.4	6.32	7.2	8.1	9.12		
Q3	2	3.15	4.2	4.4	5.11	6	7	8	9	9.5	9.9	
Q4	3			4.5	5.2	6.1	7.01	8.05	9.03	9.54	X-SP1	11
	'93	'96	'97	'98	'99	'00	'01	'02	'03	'04	'05	'06



Integrated Solutions for the RP&M Professional

“

I'm a huge fan of Magics software. In fact, I was the very first in the U.S. to purchase the DOS version. It has become an essential component in our everyday production, decreasing our programming time by 800%. The highly automated Support Generation module is fantastic. It has reduced our support design time and maximised our productivity. We'd have a hard time operating without it.

”

Bob Zubrickie • Tyco Electronics • Chair person 3D Systems User Group • USA

